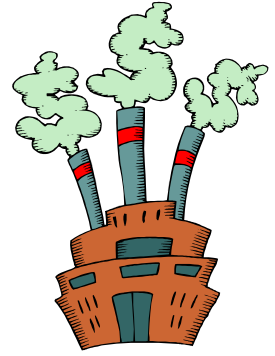


# STOP PACIFIC STEEL CASTING'S POLLUTION THREAT TO OUR COMMUNITY'S HEALTH!



## *Who is Pacific Steel?*

Pacific Steel Casting Company (PSC) is a large industrial steel foundry in West Berkeley. They employ several hundred union workers, but they are also responsible for spewing extremely dangerous toxins into the air. Each day, PSC dumps **420 pounds of toxics** into the air we breathe, and in one year they release **76 tons of chemicals** as PSC reported (however, the exact number may be much higher). This is NOT just an “odor problem,” these air pollutants are scientifically proven to threaten human health.

## *What are they emitting?*

Pacific Steel has been known to emit a vast array of toxic chemicals and toxic metals in large quantities. According to air quality permits and emissions data, the list of toxins include:

Manganese	Hexavalent Chromium	Arsenic	Lead	Benzene	Cresols
Nickel	Formaldehyde	Cadmium	Zinc	Copper	Phenol

Thanks to Global Community Monitor and the West Berkeley Community Monitoring Project, high levels of airborne Nickel and Manganese in the West Berkeley community were detected and Pacific Steel was identified as the sole polluter of these two noxious substances.



**FACT:** Airborne pollutants in West Berkeley have **increased 160%** over the past few years.

**FACT:** West Berkeley has the **highest rate** of asthma emergency room visits in all of Berkeley.

**FACT:** On Gilman Street, Nickel levels are **180-220 times higher** than the World Health Organization deems safe and Manganese levels are **10-20 times higher** than the levels that the US EPA and deems to be safe.

**FACT:** PSC accounts for **99% of all nickel** and **100% of all manganese** emitted from the 33 industrial sources in West Berkeley.

## *What are the symptoms of exposure?*

Exposure to the types of pollutants known to be emitted from Pacific Steel has been linked to the following health symptoms according to scientific studies:

- ✓ headaches
- ✓ dry cough
- ✓ nausea
- ✓ loss of coordination
- ✓ irregular heartbeat
- ✓ drowsiness



- ✓ smelling a “burning pot handle” odor
- ✓ eye, nose, or throat irritation
- ✓ chest tightness
- ✓ burning eyes
- ✓ dizziness
- ✓ dark urine

## *What are the potential long-term health effects?*

The “cocktail” of toxic chemicals and metals that PSC releases can have a range of harmful and cumulative health effects. There are recognized and suspected **carcinogens**. Suspected cardiovascular and blood toxicants increase the risk of **heart attack** and **stroke**. Long-term exposure to benzene can cause **anemia** and **leukemia**. Other chemicals are developmental and neurotoxins causing tremors, memory loss, and **IQ deficiency in children**. The toxicants also cause reproductive disorders like **birth defects** and **miscarriages**. Respiratory toxicants damage your throat and lungs significantly increasing the development of **asthma**, while gastrointestinal toxicants create liver and kidney problems.

## *What are the solutions to this problem?*

Pacific Steel’s PR fairy tale wants you to believe that they are doing everything they can, but the environmental problem persists and people are still getting sick! The perpetrators can no longer hide behind claims that the toxics are coming from the freeway or other industrial sites. The buck-passing stops today! You have a right to live in a healthy community.

Pacific Steel’s management and government officials need to take immediate action to dramatically reduce their pollution, protect community and worker health and jobs:

- Pacific Steel must implement major **pollution prevention, reduction** and control measures. They must change their inputs in the manufacturing process that are causing the release of the toxic chemicals and odors. They must also implement other design and pollution control measures to prevent and reduce emissions of odors and toxics.
- There needs to be a **centralized, transparent record keeping system** of PSC’s continuing emissions and the findings need to be made accessible for the public.
- **Community participation** is crucial in the decision-making process. The Bay Area Air Quality Management District, the City and PSC all need to notify and truly involve the public in decisions about this facility and in developing solutions.
- **Permanent fence-line air monitoring** must be mandatory.
- PSC must implement a strict **timetable and deadline** for the pollution prevention plan.



## *WHAT YOU CAN DO:*

Pacific Steel, the Bay Area Air Quality Management District, and the City of Berkeley need to be held accountable to ensure that community health is protected. Write a letter and demand that the community’s voice be heard and urge them to find a permanent solution that can protect jobs while ending the pollution from Pacific Steel.

BAAQMD APCO Jack Broadbent  
939 Ellis Street  
San Francisco, CA 94109

Mayor Tom Bates  
2180 Milvia Street  
Berkeley, CA 94704

Sources: California Air Resources Board, Bay Area Air Quality Management Board, Global Community Monitor, West Berkeley Alliance for Clean Air and Safe Jobs, Agency for Toxic Substances and Disease Registry, and Berkeley Citizen.

For more information contact: Greenaction for Health and Environmental Justice  
phone: (415) 248-5010; email: [greenaction@greenaction.org](mailto:greenaction@greenaction.org); website: [www.greenaction.org](http://www.greenaction.org)